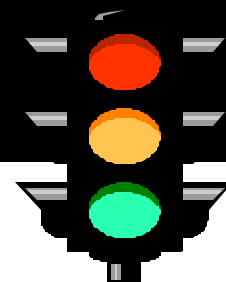
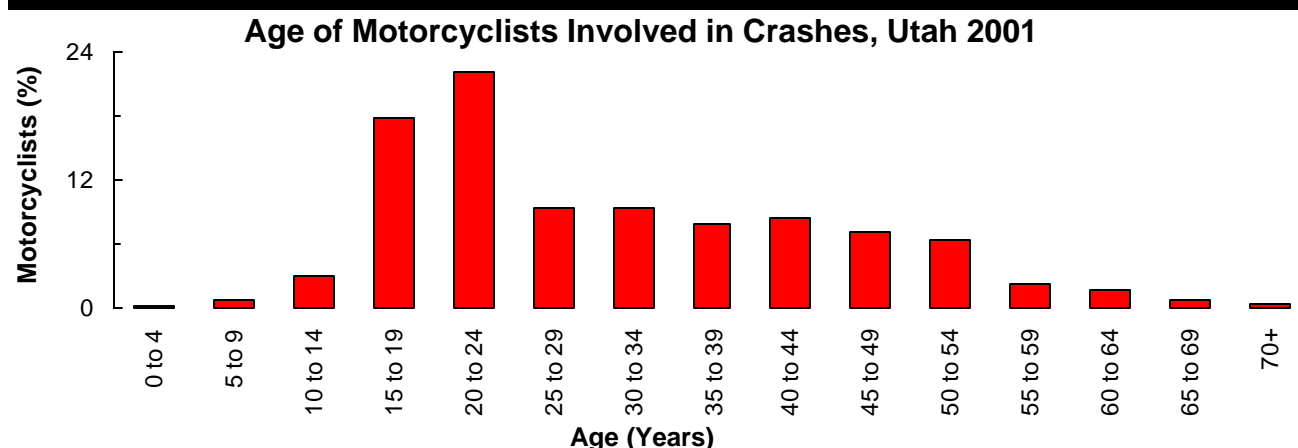


# MOTORCYCLES

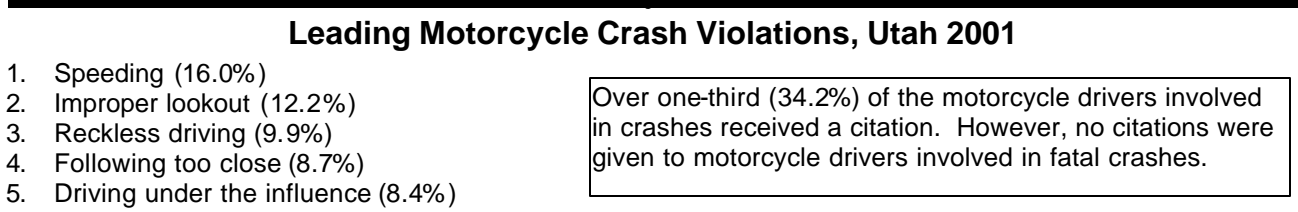
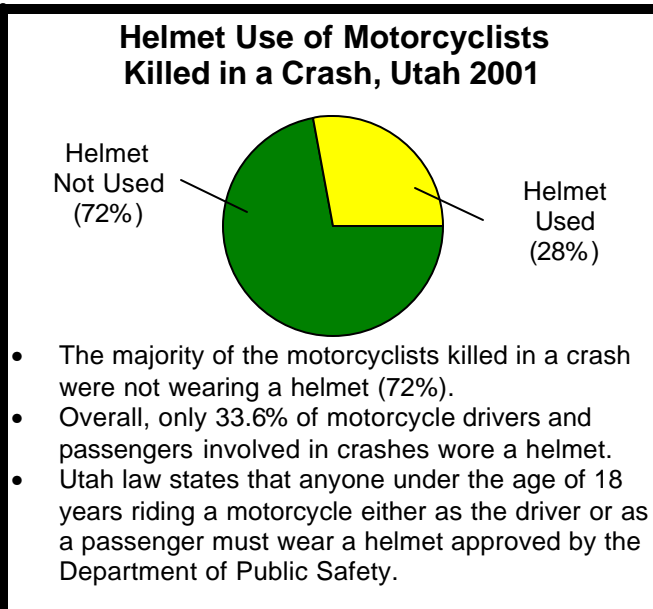
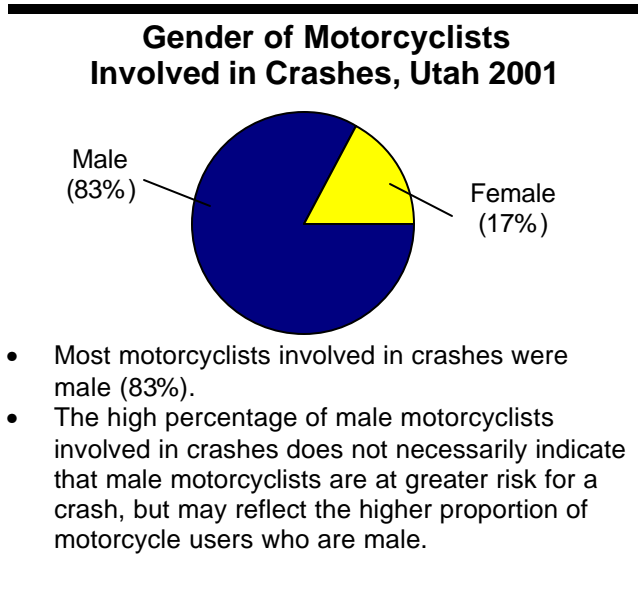


## Did you know that in 2001. . .

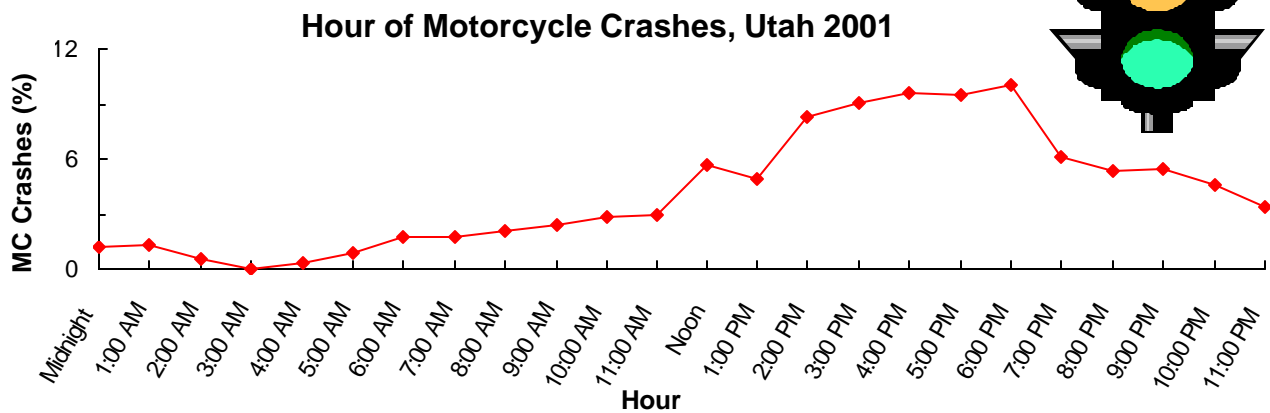
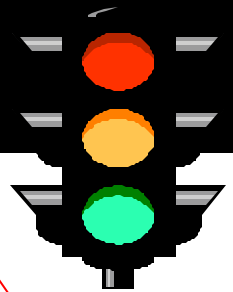
- There were 759 total motorcycle crashes in Utah, 648 motorcycle injury crashes, and 29 fatal motorcycle crashes.
- The number of total motorcycle crashes increased 3.5% from 2000, and the number of motorcycle injury crashes increased 3.8%.
- Nearly all of the motorcycle crashes resulted in an injury (89.2%) compared to 37.2% of all motor vehicle crashes.
- Fatalities were 18 times higher for motorcyclists than for other motor vehicle crash participants.



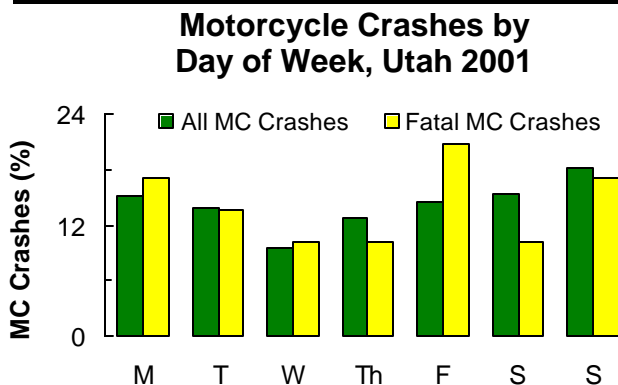
- Over one-half (53.2%) of the motorcyclists involved in crashes were under the age of 30 years.
- Motorcyclists aged 20 to 24 years were involved in the highest percentage of crashes.



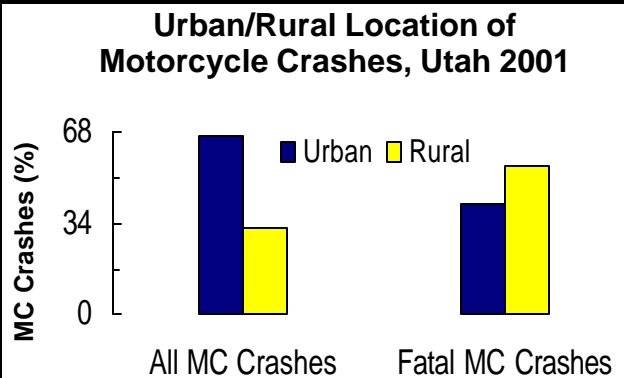
## MOTORCYCLES



- The highest percentage of motorcycle crashes occurred between 2 pm and 6 pm.



- One-third (33.6%) of all motorcycle crashes occurred on Saturday and Sunday.
- Fatal motorcycle crashes occurred most frequently on Friday (20.7%).
- Motorcycle crashes occurring on Friday were almost 2 times more likely to be fatal than motorcycle crashes occurring on other days.



- The majority of all motorcycle crashes (66.6%) occurred in urban areas.
- The largest percentage of fatal motorcycle crashes (55.2%) occurred in rural areas.
- Motorcycle crashes in rural areas were 3 times more likely to result in a fatality than motorcycle crashes in other areas.

### Leading Contributing Factors Involved in Motorcycle Crashes, Utah 2001

#### All Motorcycle Crashes

1. Speed too fast (25.0%)
2. Improper lookout (15.5%)
3. Following too closely (8.3%)
4. Non-contact vehicle involved (3.4%)
5. Driving under the influence (3.2%)
6. Improper overtaking (3.2%)

- Speeding too fast accounted for one-quarter (25.0%) of the contributing factors involved in all motorcycle crashes.
- Speeding too fast accounted for 41.4% of the contributing factors involved in fatal motorcycle crashes.

#### Fatal Motorcycle Crashes

1. Speed too fast (41.4%)
2. Drove left of center (10.3%)
3. Headlights insufficient or out (10.3%)
4. Improper overtaking (6.9%)
5. Had been drinking (6.9%)