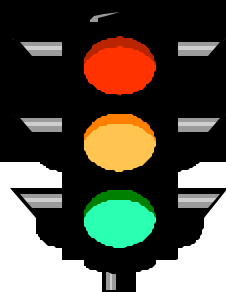


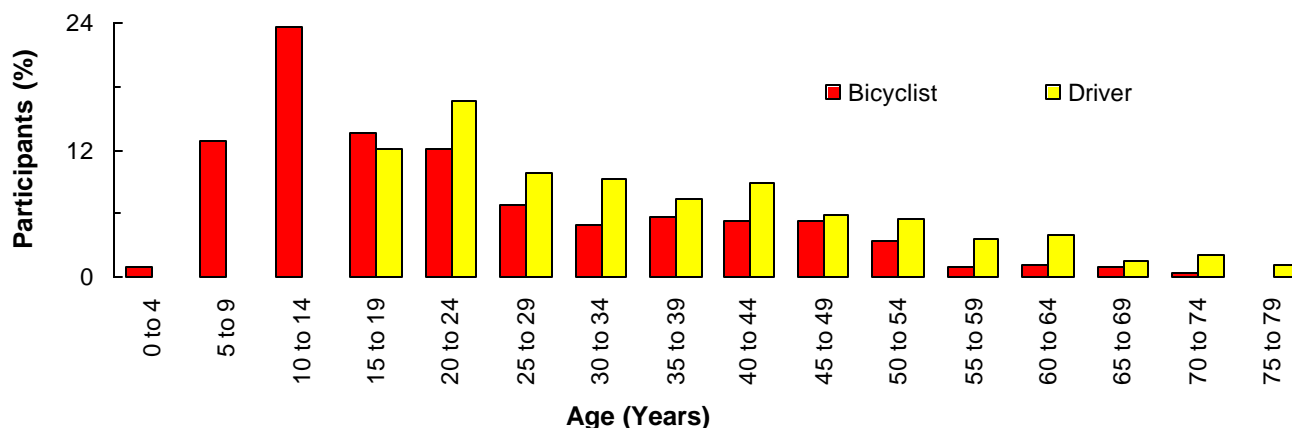
## BICYCLISTS



### Did you know that in 2001. . .

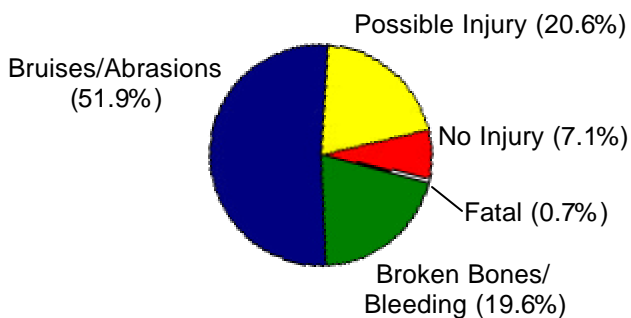
- 656 bicyclist-motor vehicle crashes occurred in Utah which resulted in 625 injured bicyclists, and 5 bicyclist fatalities.
- Bicyclists were 4 times more likely than other crash participants to die in a crash.

### Age of Participants Involved in Bicyclist-Motor Vehicle Crashes, Utah 2001



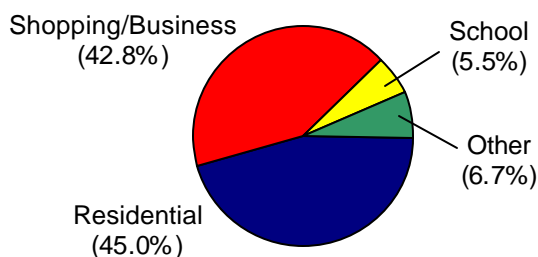
- Most bicyclists involved in crashes (50.2%) were between the ages of 5 to 19 years.
- Drivers between the ages of 15 to 24 years represented over one-quarter (28.7%) of the motor vehicle drivers involved in bicyclist-motor vehicle crashes.

### Bicyclist Injury Severity, Utah 2001



- Nearly all bicyclists sustained an injury (92.9%) compared to 21.5% of all motor vehicle crash participants.

### Location of Bicyclist-Motor Vehicle Crashes, Utah 2001



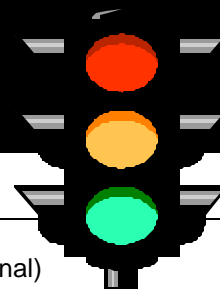
- Nearly all (87.8%) of the bicyclist-motor vehicle crashes occurred in residential or business areas.
- Only 5.5% of bicyclist-motor vehicle crashes occurred at schools.

### Leading Driving Factors that Contributed to Bicyclist-Motor Vehicle Crashes

- Improper Lookout (42.8%)
- Failed to Yield the Right of Way (31.5%)
- Hit and Run (10.9%)
- Speed Too Fast (2.3%)
- Improper Turn (2.1%)

**CITATIONS:** Over one-quarter (28.2%) of the drivers involved in bicyclist-motor vehicle crashes received a citation. The leading violation was "failure to yield right of way" (42.7%).

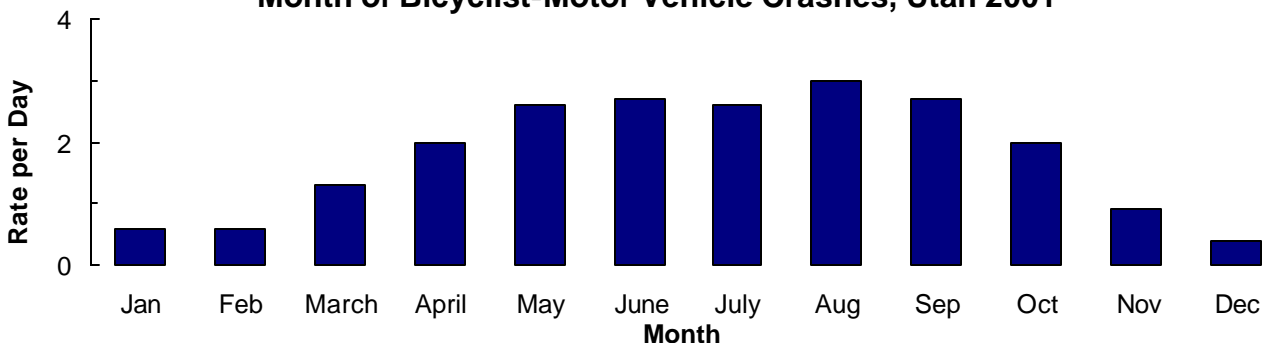
## BICYCLISTS



### Bicyclist Actions Prior to Bicyclist-Motor Vehicle Crashes, Utah 2001

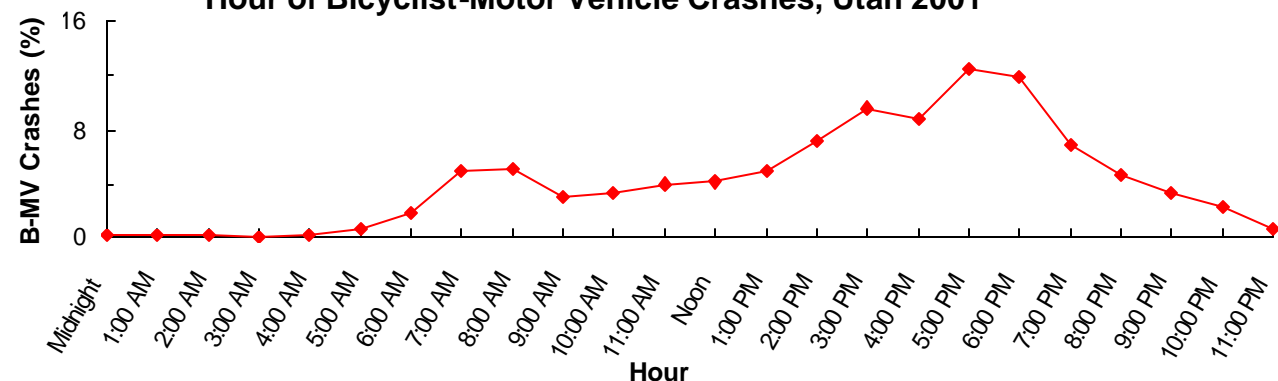
1. Riding in roadway with traffic (20.5%)
  2. Riding in roadway against traffic (18.6%)
  3. Crossing intersection no signal (16.5%)
  4. Crossing intersection with signal (16.1%)
  5. Crossing intersection against signal (10.0%)
- Crossing at the intersection (with signal, without signal, and against signal) comprised almost half (42.6%) of the bicyclists actions prior to a crash.
  - Coming from behind parked cars only represented 1.6% of the bicyclists action prior to a crash.

### Month of Bicyclist-Motor Vehicle Crashes, Utah 2001



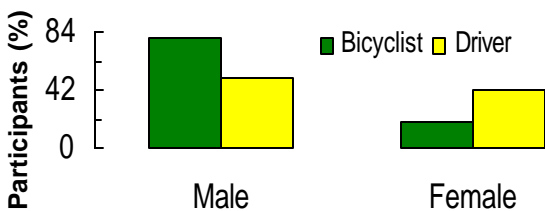
- May through September had the highest rates per day of bicyclist-motor vehicle crashes.

### Hour of Bicyclist-Motor Vehicle Crashes, Utah 2001



- Bicyclist-motor vehicle crashes peaked during the late afternoon and early evening (2:00 pm to 6:00 pm)

### Gender of Participants Involved in Bicyclist-MV Crashes, Utah 2001



- Most bicyclists involved in bicyclist-motor vehicle crashes were male (80.5%).
- Half (50.8%) of the drivers involved in bicyclist-motor vehicle crashes were male.

### Alcohol

- Of the 5 bicyclist fatalities, none of the bicyclists were impaired by alcohol or other drugs.
- Of the motor vehicle drivers involved in a fatal bicyclist-motor vehicle crash, 1 was impaired by alcohol or other drugs.

### Helmet Use

- Helmet use was not coded consistently for bicyclists at the time of the crash, cannot be reported with accuracy, and is not included.