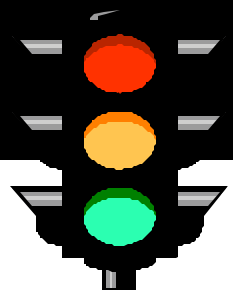
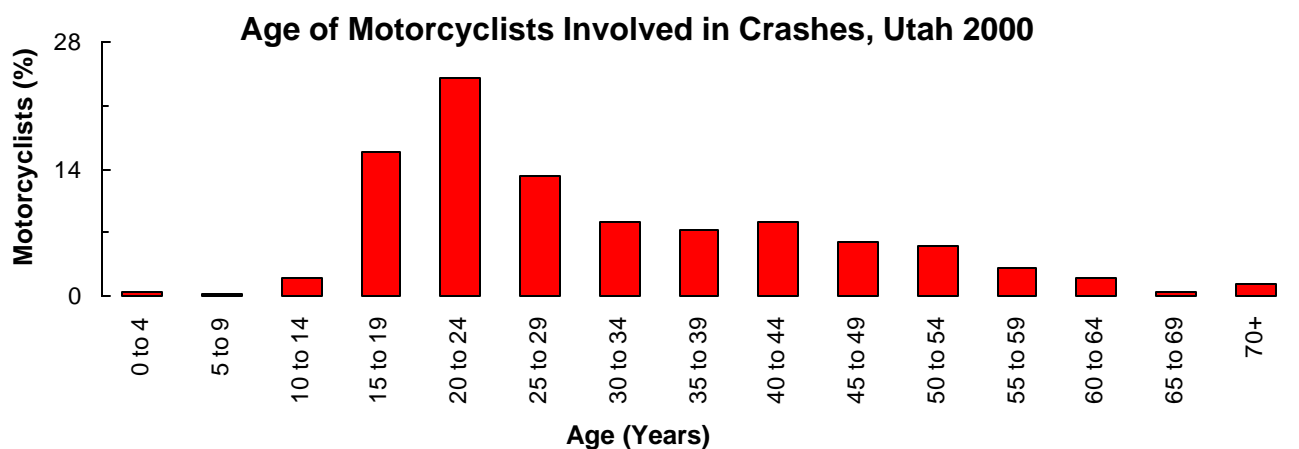


MOTORCYCLES

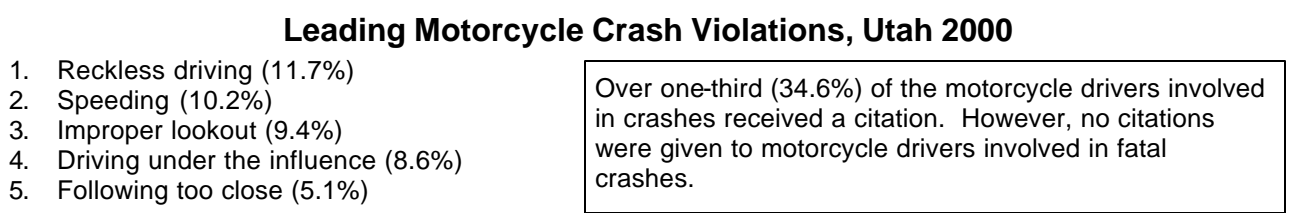
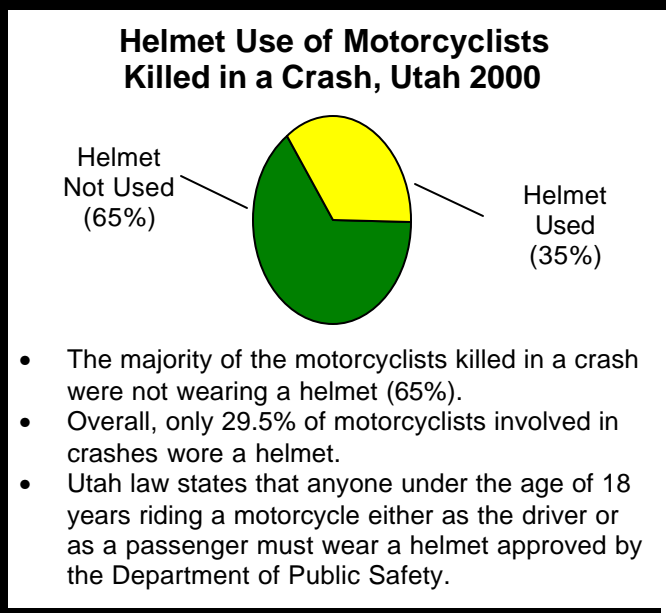
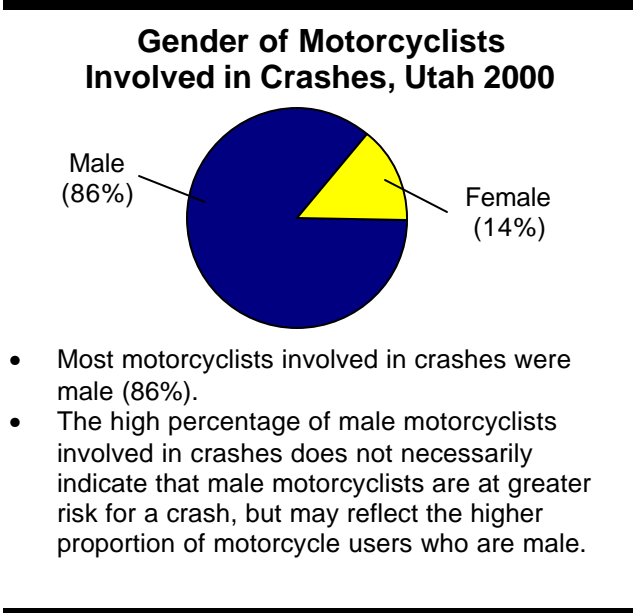


Did you know that in 2000. . .

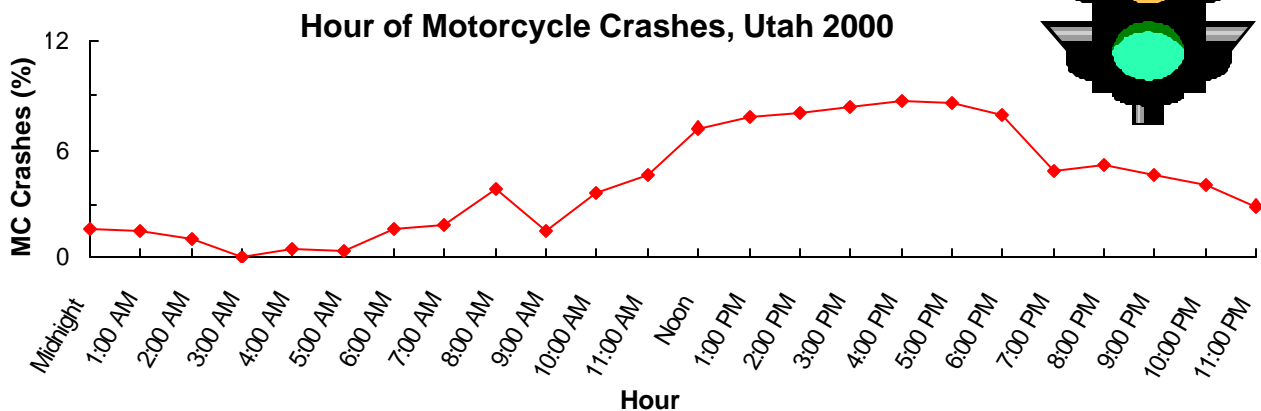
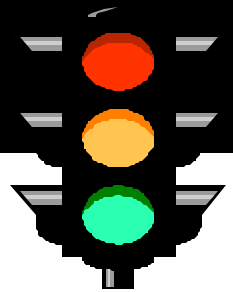
- There were 733 total motorcycle crashes in Utah, 624 motorcycle injury crashes, and 21 fatal motorcycle crashes.
- The number of total motorcycle crashes increased 8.1% from 1999, and the number of motorcycle injury crashes increased 3.7%.
- Nearly all of the motorcycle crashes resulted in an injury (88.0%) compared to 37.4% of all motor vehicle crashes.
- Fatalities were 9 times higher for motorcyclists than for other motor vehicle crash participants.



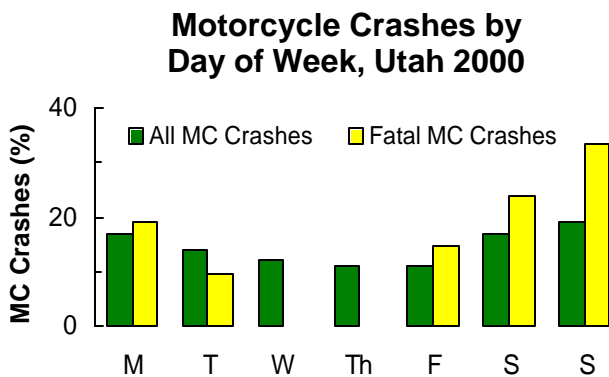
- Over one-half (55.9%) of the motorcyclists involved in crashes were under the age of 30 years.
- Motorcyclists aged 20 to 24 years were involved in the highest percentage of crashes.



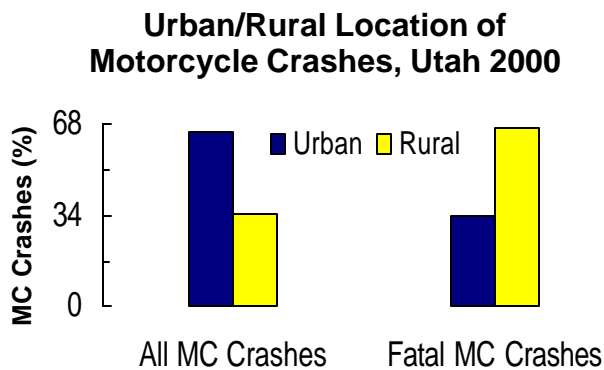
MOTORCYCLES



- The highest percentage of motorcycle crashes occurred between 4 pm and 5 pm.



- Over one-third (35.6%) of all motorcycle crashes occurred on Saturday and Sunday.
- Fatal motorcycle crashes occurred most frequently on Sunday (33.3%).
- Motorcycle crashes occurring on Sunday were 2 times more likely to be fatal than motorcycle crashes occurring on other days.



- The majority of all motorcycle crashes (66.1%) occurred in urban areas.
- The largest percentage of fatal motorcycle crashes (66.7%) occurred in rural areas.
- Motorcycle crashes in rural areas were 4 times more likely to result in a fatality than motorcycle crashes in other areas.

Leading Contributing Factors Involved in Motorcycle Crashes, Utah 2000

All Motorcycle Crashes

1. Speed too fast (27.6%)
2. Improper lookout (11.0%)
3. Following too closely (6.2%)
4. Non-contact vehicle involved (4.2%)
5. Improper overtaking (3.9%)
6. Driving under the influence of alcohol or drugs, or had been drinking (3.7%)

- Speeding too fast accounted for approximately one-quarter (27.6%) of the contributing factors involved in all motorcycle crashes.
- Speeding too fast accounted for one-half (50.0%) of the contributing factors involved in fatal motorcycle crashes.

Fatal Motorcycle Crashes

1. Speed too fast (50.0%)
2. Drove left of center (9.1%)
3. Improper lookout (4.5%)
4. Non-contact vehicle involved (4.5%)
5. Disregarded traffic signal (4.5%)
6. Explosion or fire (4.5%)