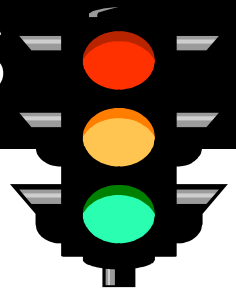


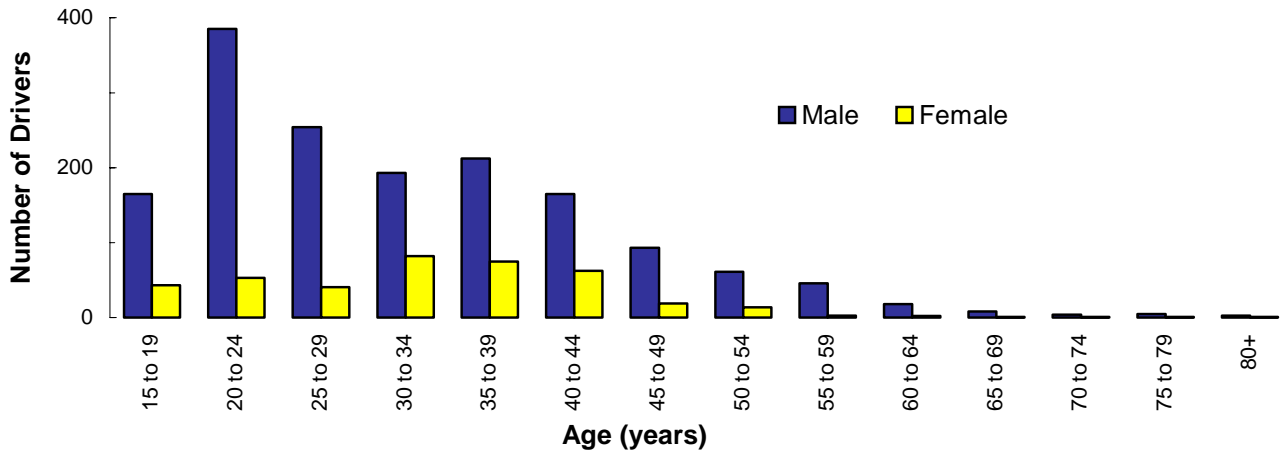
## ALCOHOL and OTHER DRUGS



### Did you know that in 1999. . .

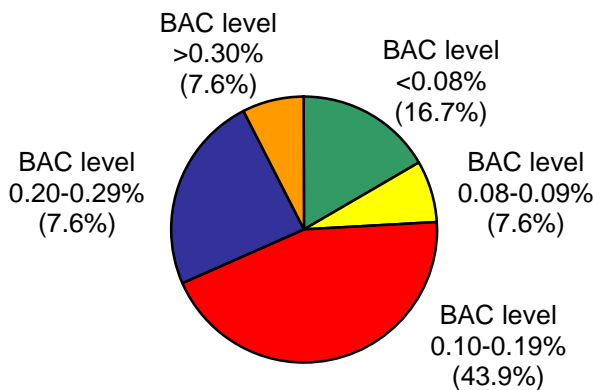
- ◆ There were 2,045 alcohol and other drug-related crashes in Utah that resulted in 1,851 injuries and 72 fatalities.
- ◆ Over half (58.8%) of alcohol and other drug-related crashes resulted in at least one injury compared to 37.6% of all motor vehicle crashes.
- ◆ Alcohol and other drug-related crashes were 6.7 times more likely to be fatal than non-alcohol/drug-related crashes.

### Age and Gender of Drivers Involved in Alcohol and Other Drug-Related Crashes



- Male drivers were involved in the majority (80.4%) of alcohol and other drug-related crashes.
- Overall, male drivers between the ages of 20 to 24 years were involved in the largest number (385) of alcohol and other drug-related crashes.
- For female drivers, the age group of 30 to 34 years had the highest number (82) of alcohol and other drug-related crashes.
- Of the impaired drivers, 288 (17.7%) were under the age of 21 years.

### Blood Alcohol Concentration (BAC) Levels of Drivers Involved in Fatal Alcohol-Related Crashes



- The majority (83.3%) of drivers involved in fatal alcohol-related crashes had blood alcohol concentration levels at or above the legal limit of 0.08%.

### Driving Under the Influence

Driving under the influence (DUI) is driving (or in physical control of) a vehicle on a roadway in Utah with a blood alcohol content of 0.08% or more, or "unsafe" driving due to alcohol or other drugs in the body.

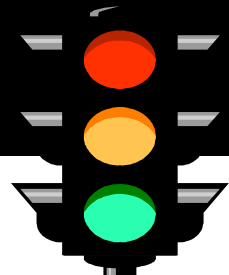
In 1999 there were 14,118 DUI arrests in Utah. The arrests occurred in the following counties:

1. Salt Lake (34.2%)
2. Utah (11.1%)
3. Weber (10.5%)
4. Davis (10.0%)
5. Washington (3.6%)
6. Summit (3.4%)
7. Tooele (3.1%)
8. Cache (2.9%)
9. Other Counties (21.1%)

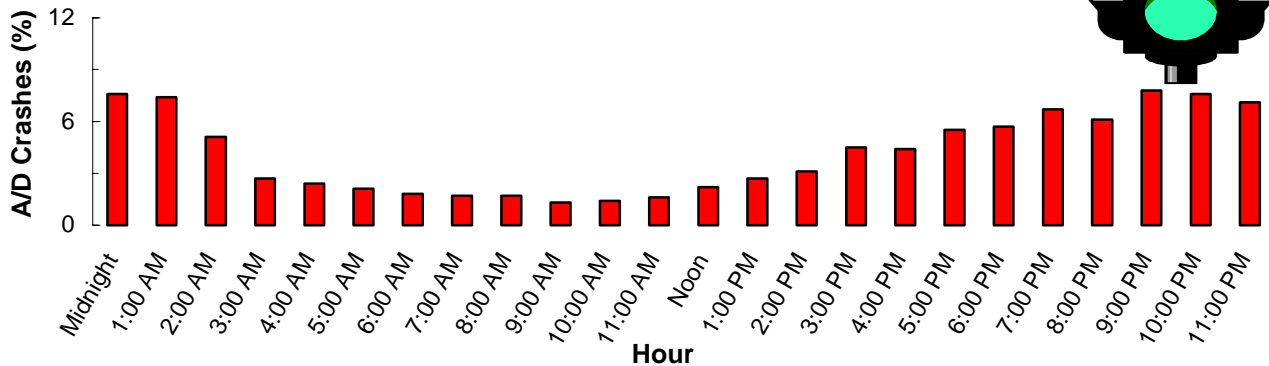
The ages of those arrested for DUI were:

Age	DUI Arrests	Age	DUI Arrests
15-20	1,272 (9.0%)	37-48	3,865 (27.4%)
21-24	2,516 (17.8%)	49+	1,377 (9.8%)
25-36	5,088 (36.0%)	Total	14,118 (100.0%)

## ALCOHOL and OTHER DRUGS

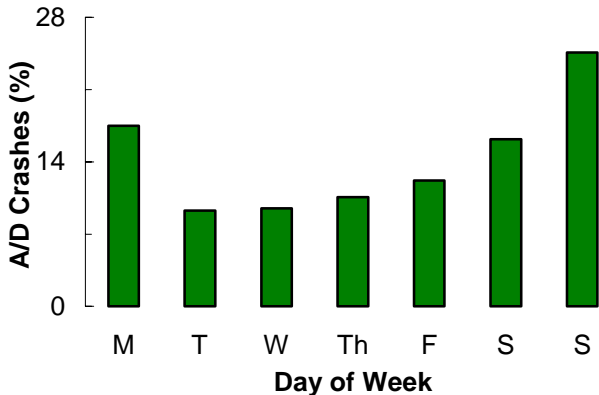


**Time of Day Alcohol and Other Drug-Related Crashes Occurred**



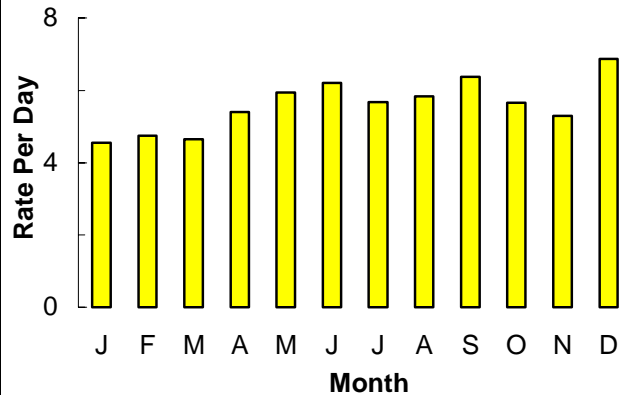
- Alcohol and other drug-related crashes peaked between 9:00 pm and 1:00 am. This is unlike most other types of motor vehicle crashes that tend to peak earlier in the evening (5:00 pm).

**Day of the Week Alcohol and Other Drug-Related Crashes Occurred**



- Over half (58.3%) of the total alcohol and other drug-related crashes occurred on Saturday, Sunday and Monday.
- For fatal alcohol and other drug-related crashes, more than half (56.1%) occurred on Sunday and Monday.

**Month of the Year Alcohol and Other Drug-Related Crashes Occurred**



- The highest rate of total alcohol and other drug-related crashes occurred in December.
- For fatal alcohol and other drug-related crashes, July had a rate that was at least 1.5 times higher than any other month of the year.

### Alcohol and Other Drug Involvement in Different Types of Motor Vehicle Crashes



**Pedestrian Crashes**

Of the 38 pedestrian fatalities, 6 pedestrians and 2 drivers were impaired by alcohol and other drugs.



**Bicyclist-Motor Vehicle Crashes**

Of the 7 bicyclist fatalities, none were impaired by alcohol or other drugs. No impaired motor vehicle drivers were involved in fatal bicyclist-motor vehicle crashes.



**Motorcycle Crashes**

Of the 23 motorcyclist fatalities, 4 involved alcohol and other drug use by the motorcycle driver.